



Main Display 1

04.05.06
15:32:50

| | | | | | | | |
|-----|-----|-----|-----|-----|-----|-----|-----|
| C1 | C2 | C3 | C4 | C5 | C6 | C7 | C8 |
| | | | | n/a | n/a | n/a | n/a |
| C9 | C10 | C11 | C12 | C13 | C14 | C15 | C16 |
| n/a | n/a | n/a | n/a | n/a | n/a | n/a | n/a |

Pressure [bar]

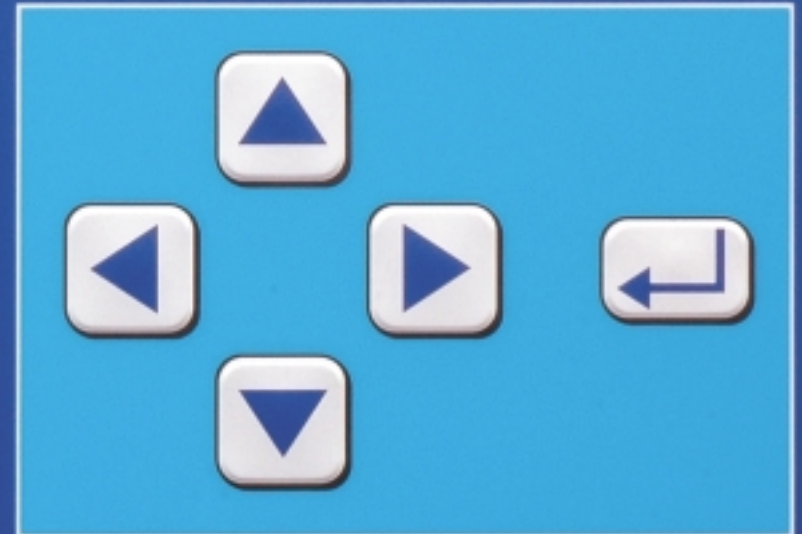
7.8

Free Air Del. [m³/h]

1860



airtelligence



www.boge.com

Original size 1:1

Surely the most intelligent way to improve compressed air energy efficiency.

1

2

3

4

5

6

7

8

9

10

11

12

13

14

15

16

airtelligence. Energy efficient control for up to 16 compressors.

Because we are actively aware of the high price of energy we have tried even harder to control your costs.

And, when it comes to the larger sized compressor, saving money becomes a very profitable imperative.

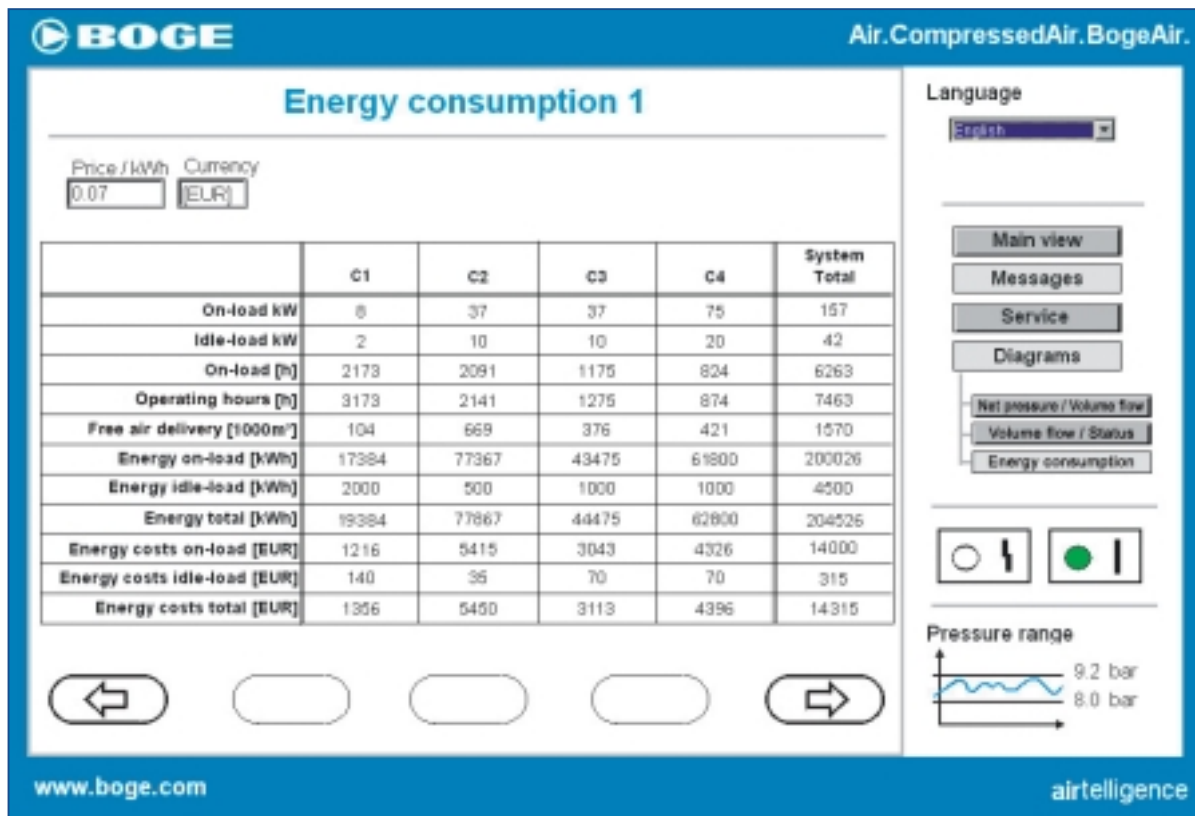
The optimisation of your operating costs, the reduction of your maintenance costs via a self acting control system like **airtelligence** will admirably serve your interests. This multiple compressor controller is designed to coordinate and harmonise up to 16 compressors of different types.

airtelligence providently manages your system to ensure the best possible operating efficiency whilst at the same time monitors the entire range of functions to assure even more profitable and effective production output.



Large sized back lighted LC display (320 x 240 pixels) including clear text display.
Function keys for easy and intuitive operation.

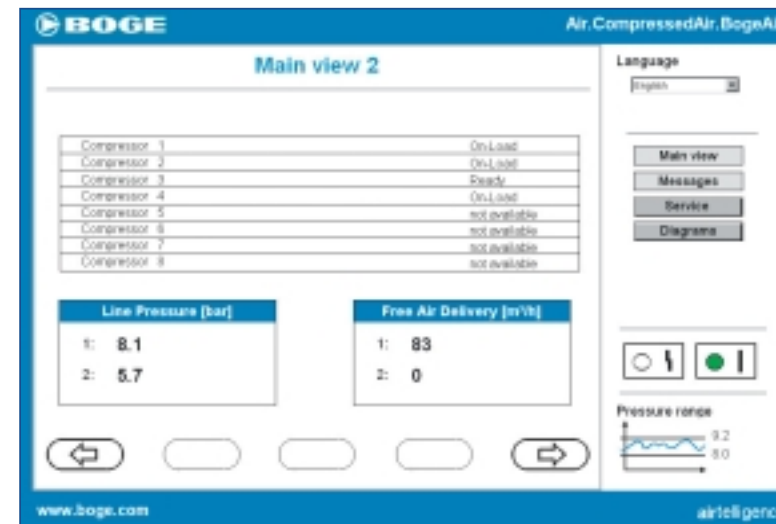
airtelligence. Availability, Supply Dependability, Consumption Optimisation.



Reduced downtime risks due to transparency and control.
Operating data, maintenance intervals, error messages – no detail forgotten.

airtelligence is designed to control every compressor in a multi-compressor system by selecting the ideal compressor or multiple of compressors to match the system demand based on air consumption. Moreover, airtelligence intelligently forecasts additional or reduced demand and automatically switches priorities to optimise the combination of compressors running at any one time.

This serves to reduce load/idle run switch cycles and massively saves on electrical power by virtually eliminating expensive idle run times. airtelligence is ideal for optimising existing systems where the controller can determine potential leakage and net capacity.



airtelligence. More than just a pretty case!



Works with most compressors! Flexible configuration utilising four machine modules (4, 8, 12, 16 compressors)

Dimensions H/W/D: 50/50/21 cm, power supply: 230 V AC, protection class: IP 54, pressure sensor: 0-16 bar or 0-40 bar resp., 4-20 mA.

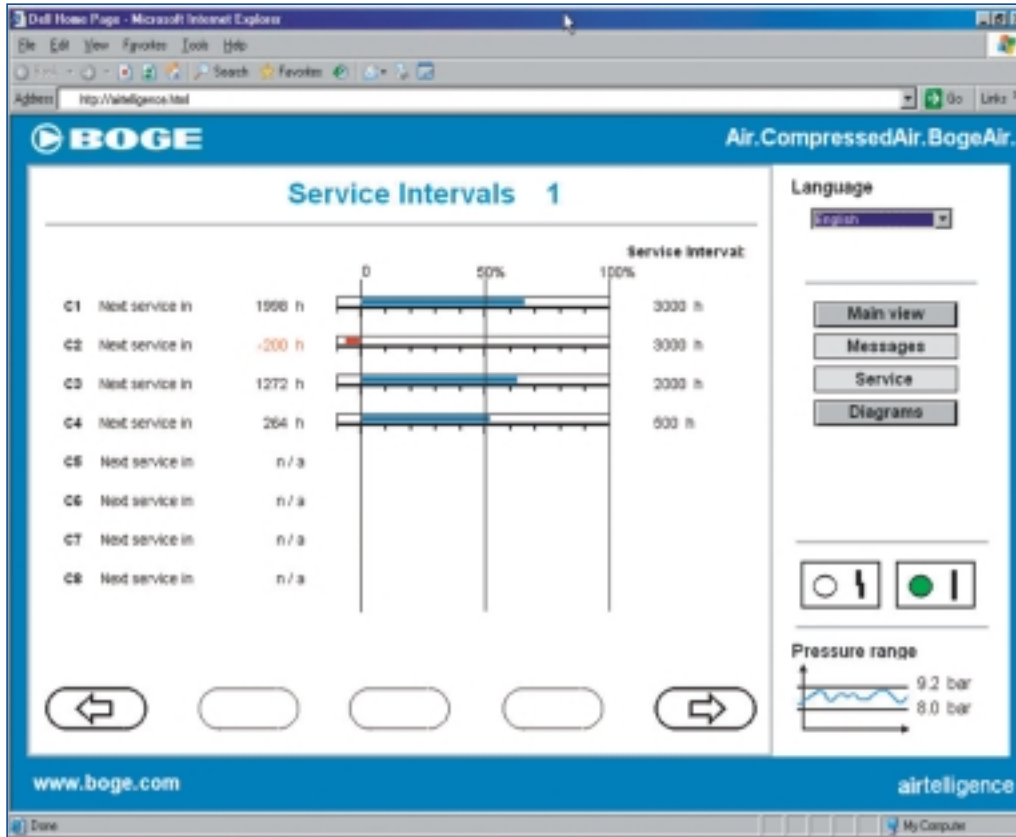
All compressors can work within a small, common, pressure range (0.2-0.3 bar possible). Compressors start in a pre-selected priority order according to their output and the system demand. Compressors of equal output are automatically rotated to ensure uniform usage and optimised maintenance.

- airtelligence is designed to detect which compressors are available and ready for use.
- If a selected compressor fails, airtelligence automatically switches to the next available unit.
- In the unlikely event of controller failure airtelligence fails safe and the compressors revert to their own pressure transducers and switches.
- airtelligence has a built in real time clock as well as a switch clock that serves as a freely programmable timer for the connected compressors or peripheral equipment.

Integrates up to two compressors (frequency and/or proportional control) in a multi compressor system.



airtelligence. Just click and look.

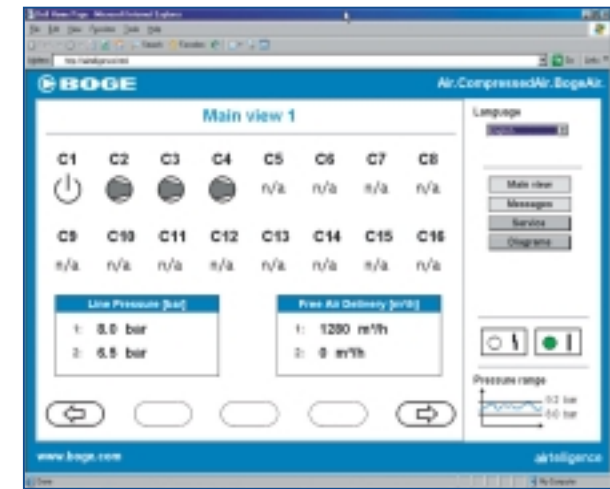


Permanent around-the-clock update of major information and operating conditions on your computer. Extensive web browser visualisation.

It's ever so easy and functional. Computer visualisation of all relevant parameters and evaluations, e.g.:

- error and alert messages as popups
- maintenance intervals for all compressors including remaining times
- net pressure and volume flow diagrams for the entire compressed air station
- volume flow and operating status diagrams for the individual compressors
- evaluation of energy consumption and energy costs of the individual compressors and the entire compressed air station

Reliable condition monitoring through integration with operator's central master display.



Surely the most intelligent way to improve compressed air energy efficiency.

 **Efficiency. Transparency. airtelligence.**



Test your a Q*!

*airtelligence quotient

Play the game. Simply download at <http://www.boge.com>

We at BOGE plan, develop, manufacture, distribute and service compressed air supply systems for customers in the field of plant construction, industry and workshops.

Our ranges of services include the following:

- ▶ Planning and engineering of compressed air systems
- ▶ Oil-free piston, screw and turbo compressors
- ▶ Oil-lubricated piston compressors and screw compressors with oil-injection cooling
- ▶ Compressed air purification
- ▶ Compressed air distribution and storage
- ▶ Compressed air accessories
- ▶ Compressed air service
- ▶ System control and display

In Germany we are one of the market leaders in our sector. Worldwide we are represented by our own branch offices, subsidiaries and distribution and service partners.



P.O. Box 100713 · D-33507 Bielefeld
Otto-Boge-Straße 1-7 · D-33739 Bielefeld
Fon (+49) (5206) 601-0
Fax (+49) (5206) 601-200
info@boge.com · www.boge.com